

Hippos (Sussita) Excavations 2011 – 12th Season Daily Log + Drawing

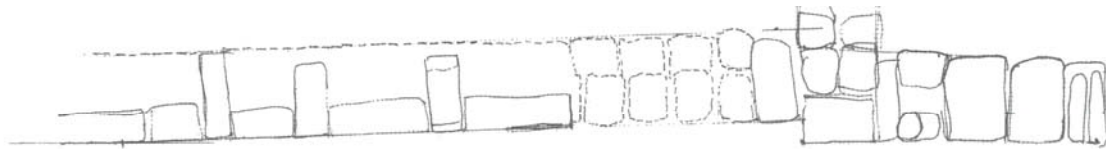
Date: 26 July 11 Area: NIP Manager: Schuler

Squares	G9	XXYY0	XXYY0
Loci	1940	1941	1941
Baskets	2459	2460	2461
Walls	1298		
Floors	1939		

1) Northeast Zone

a) Continued work in Square XX/yy1.

- (1) Goal = Explore east wall (W1298) of peristyle house
- (2) Starting elevation = 132.20
- (3) Ending elevation = 132.15
- (4) Worked ended

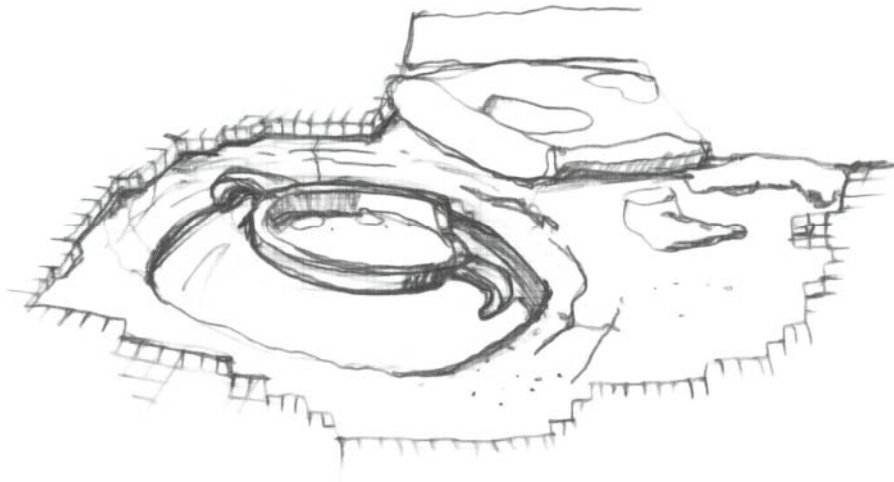


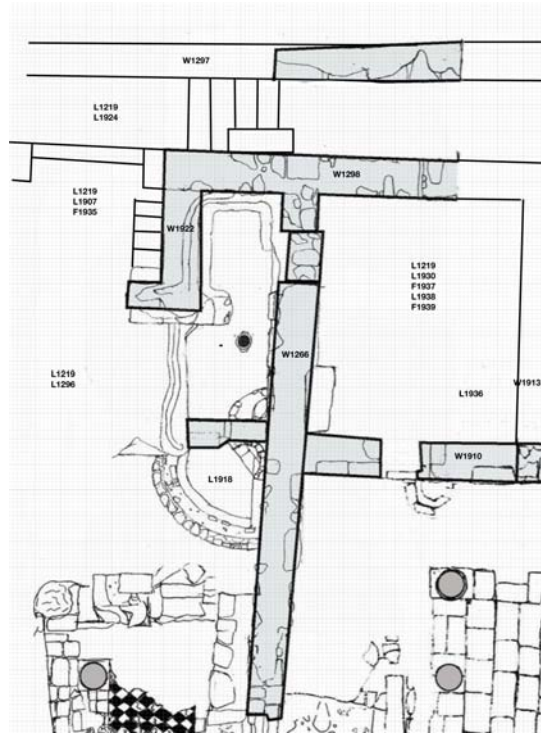
Circle 4 North Side Face



b) Conservation of mosaic floor in XXYY0

- (1) Basket = 2460, 2461
- (2) Starting elevation = 130.08 (top of channels), 129.84 (mosaic)
- (3) Ending elevation = 129.84
- (4) Workers identified a thin line of plaster, indicating that the fixture on the north wall had a comparable feature on the south. The features are 78 cm apart offset to the north.
- (5) In a lacuna in the mosaic (F1939), conservators identified a pot buried into the floor. Someone had cut the mosaic to insert the pot. The pot is Kfar Hananya form C.
- (6) We covered and hid the pot for excavation tomorrow.

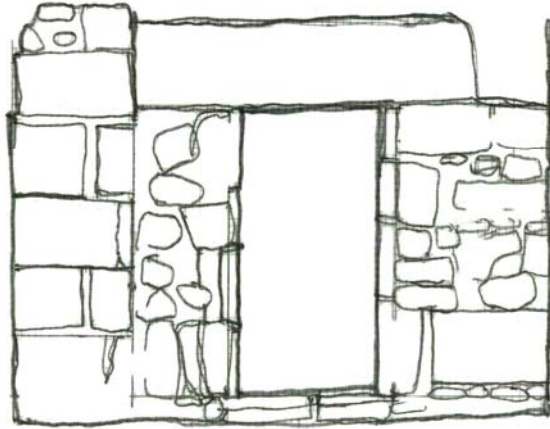




2) Southwest Zone

a) Continued work in Square G9.

- (1) Goal = Excavate NW room of alpha complex
- (2) Basket = 2459
- (3) Starting elevation = 128.78
- (4) Ending elevation = 128.09
- (5) Soil is Horizon C.
- (6) Reached threshold and floor in eastern part of square.
- (7) Nail fragment # 600 (Found in the west side of the square (west of W2002),
Head width: 4.5 cm x 3.5 cm, Shaft width: 1 cm)



G9 West face
1923

- (8) There may be a north to south stylobate forming a corner with the one in F9
- (9) In the western part of the square, had difficulty identifying floor.

